

SE 1/4 OF NE 1/4 OF

SECTION 4, T.6N., R.1W., S.L.B. & M.

3-2

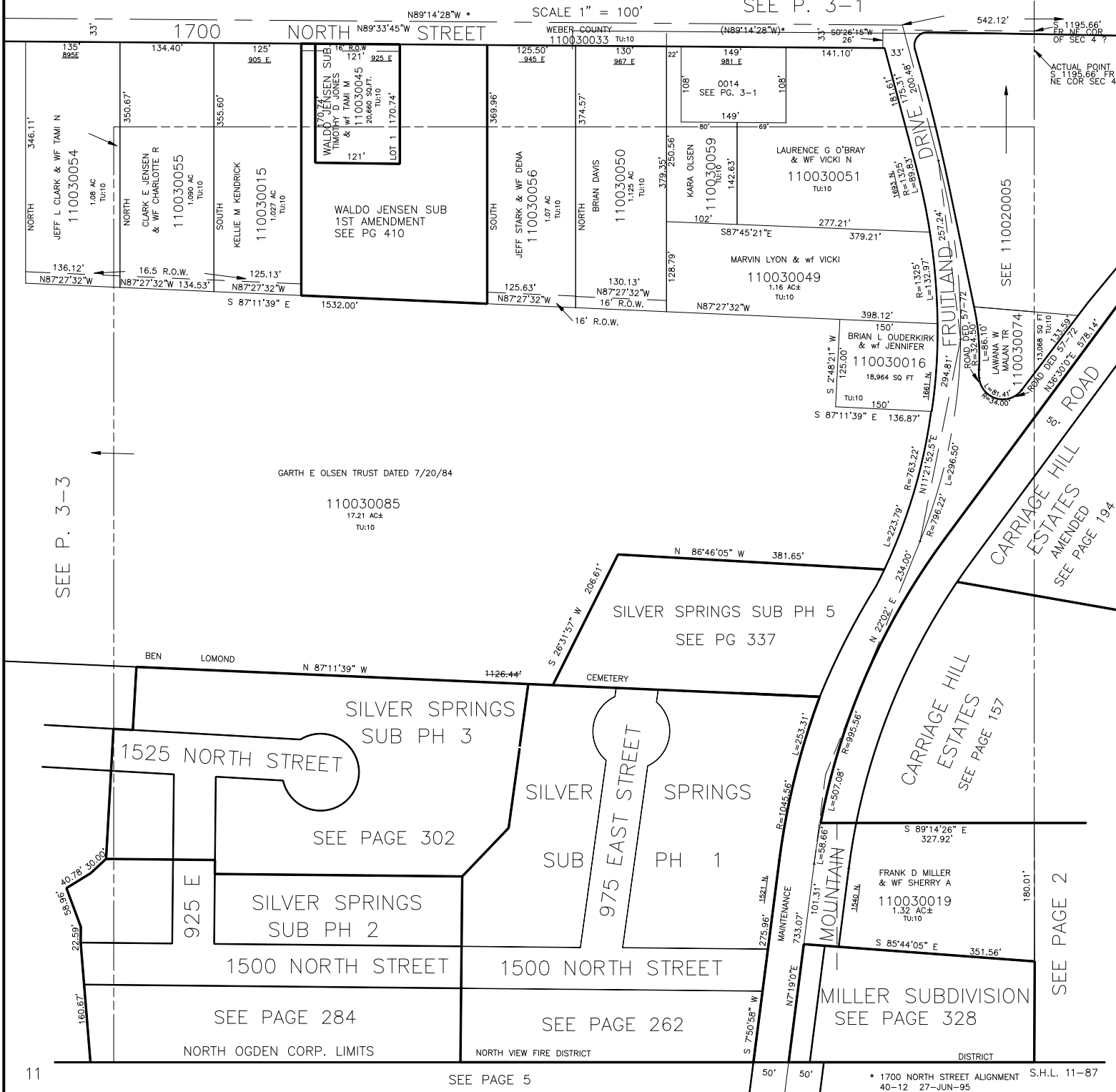
TAXING UNIT: 10,66

IN NORTH OGDEN CITY

ALSO SEE P. 3-3,4

SCALE 1" = 100'

SEE P. 3-1



SEE P. 3-3

GARTH E OLSEN TRUST DATED 7/20/84

110030085  
17.21 AC±  
TU:10

SILVER SPRINGS SUB PH 5  
SEE PG 337

SILVER SPRINGS  
SUB PH 3

1525 NORTH STREET

SEE PAGE 302

SILVER SPRINGS  
SUB PH 2

1500 NORTH STREET

SEE PAGE 284

SILVER SPRINGS  
SUB PH 1

1500 NORTH STREET

SEE PAGE 262

CARRIAGE HILL  
ESTATES  
SEE PAGE 157

FRANK D MILLER  
& Wf SHERRY A  
110030019  
1.32 AC±  
TU:10

MILLER SUBDIVISION  
SEE PAGE 328

SEE PAGE 2

11

SEE PAGE 5

\* 1700 NORTH STREET ALIGNMENT S.H.L. 11-87  
40-12 27-JUN-95